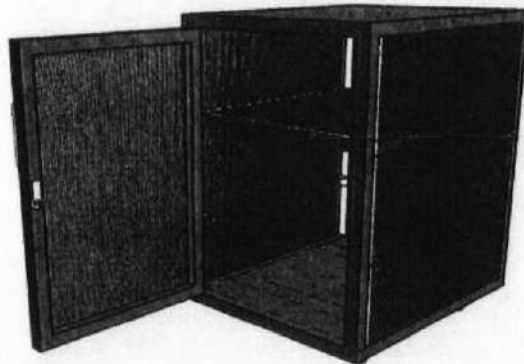


CLASS D

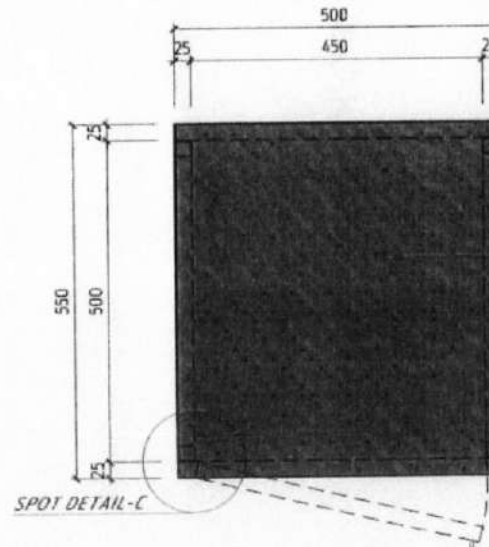
NOTES :

- WRITTEN DIMENSIONS ON THESE DRAWINGS SHALL HAVE PRECEDENCE OVER SCALED DIMENSIONS.
- CONTRACTOR/SUPPLIER SHALL VERIFY AND BE RESPONSIBLE FOR ALL DIMENSIONS AND CONDITIONS OF THE JOB.
- **PMED** MUST BE NOTIFIED IMMEDIATELY OF ANY VARIATIONS FROM THE DIMENSIONS AND CONDITIONS SHOWN IN THESE DRAWINGS.



G. A. 18 PERFORATED METAL SHEET ON QUICK DRY ENAMEL FINISH BENDED ON SIDES COLOR: COOL GRAY PANTONE 5C MATCHING EXISTING COLOR OF SYSTEMS FURNITURE (DETACHABLE / ADJUSTABLE SHELF)

PERSPECTIVE



G. A. 18 PLAIN METAL SHEET ON QUICK DRY ENAMEL FINISH COLOR: COOL GRAY PANTONE 5C MATCHING EXISTING COLOR OF SYSTEMS FURNITURE


PLAN

SPECIFICATIONS

- G.A. 18 PERFORATED METAL SHEET ON AUTOMOTIVE PAINT FINISH COLOR: COOL GRAY PANTONE 5C (MATCHING EXISTING COLOR OF SYSTEMS FURNITURE)
- G.A. 18 PLAIN METAL SHEET ON AUTOMOTIVE PAINT FINISH COLOR: COOL GRAY PANTONE 5C (MATCHING EXISTING COLOR OF SYSTEMS FURNITURE)
- 1.5mm THK. x 25mm x 25mm SQUARE STEEL TUBE FRAMING
- 1.5mm THK. x 25mm x 25mm ANGLE BAR SUPPORT FOR SHELVES
- G.A. 18 PLAIN METAL SHEET ON QUICK DRY ENAMEL FINISH BENDED ON SIDES COLOR: COOL GRAY PANTONE 5C (MATCHING EXISTING COLOR OF SYSTEMS FURNITURE) DETACHABLE/ADJUSTABLE SHELF

NOTE: THIS ENCLOSURE WAS BASED ON THE NVR DIMENSION OF 49.5cm L x 29cm W x 10cm H (PLEASE COORDINATE WITH END USER/BRANCH PRIOR TO FABRICATION FOR VERIFICATION OF COLOR)

REV.1 (May 25, 2018)

 <p>LAND BANK OF THE PHILIPPINES PROJECT MANAGEMENT & ENGINEERING DEPT. 1598 M.H. DEL PILAR ST., CORNER DR. QUIRTOS ST., MALATE MANILA.</p>	<p>TITLE:</p> <p>NETWORK VIDEO ENCLOSURE (NVR) ENCLOSURE WITH DETACHABLE/ ADJUSTABLE SHELF</p> <p>LANDBANK STANDARD DETAILS & SPECIFICATIONS</p>	<p>RECOMMENDING APPROVAL:</p> <p><i>Emilio D. Samaniego</i> EMILIO D.J. SAMANIEGO HEAD, PMED</p>	<p>DESIGN: TSUJPMED</p> <p>DRAWN: TSUJPMED</p> <p>DATE: 04 February 2021</p> <p>CHECKED: ISPADUA</p> <p>REVIEWED: J MSLANG</p>	<p>SHEET NO:</p> <p>NVRE-10F2</p>

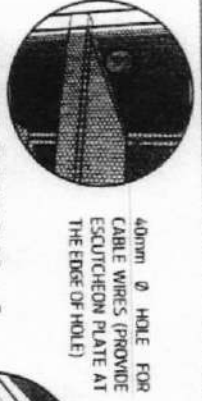
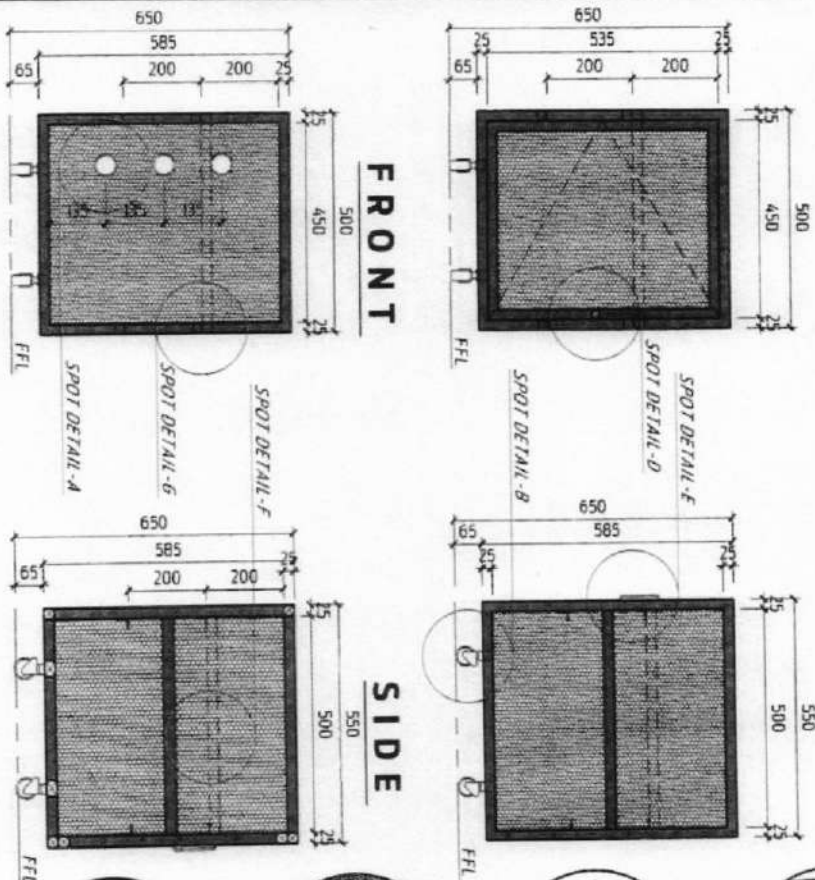
Revised Annex
D-19

NOTES :

- WRITTEN DIMENSIONS ON THESE DRAWINGS SHALL HAVE PRECEDENCE OVER SCALED DIMENSIONS
- CONTRACTOR/SUPPLIER SHALL VERIFY AND BE RESPONSIBLE FOR ALL DIMENSIONS AND CONDITIONS OF THE JOB
- **REVISIONS** MUST BE NOTED BOTTOM RIGHTLY OF ANY DRAWING FROM THE DIMENSIONS AND CONDITIONS STIPULATED THEREIN.

CLASS D

NVR CASING DIMENSIONS:
L: 550mm x W: 500mm x H: 65mm



SPOT DETAIL-A



SPOT DETAIL-C



SPOT DETAIL-B



SPOT DETAIL-D



SPOT DETAIL-E



SPOT DETAIL-G



SPOT DETAIL-F

REAR

SECTION

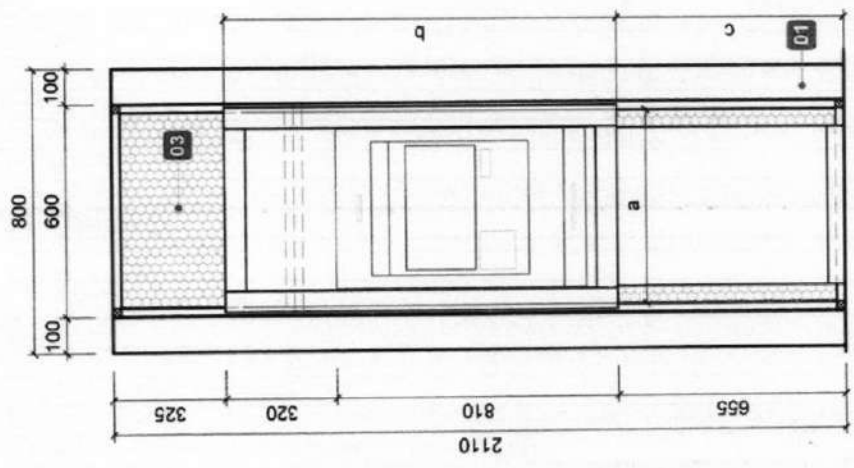
NOTE:
ALL METAL SURFACE SHALL BE PAINTED WITH WITH QUICK DRY ENAMEL PAINT FINISH
COLOR: COOL GRAY PAINTONE SC (APPLY 3 COATS OF PRIMER PRIOR TO TOP COAT) REF: (May 25, 2018)

<p>LAND BANK OF THE PHILIPPINES PROJECT MANAGEMENT & ENGINEERING DEPT. 1588 M.H. DEL PILAR ST. CORNER DR. QUINTOS ST. MALATE MANILA</p>	TITLE	RECOMMENDING APPROVAL	DESIGN	TOUP/RSO	SHEET NO.
	<p>NETWORK VIDEO ENCLOSURE (NVR) ENCLOSURE WITH DETACHABLE/ ADJUSTABLE SHELF</p> <p>LAND BANK STANDARD DETAIL & SPECIFICATIONS</p>	<p>EMERCO O.J. SAMPANIEGO HEAD PM/ENG</p>	<p>DATE: 04 February 2018</p> <p>CHECKED: WPA/DJA</p> <p>REVIEWED: LIT/ELNG</p>	<p>DRAWN: TEL/JASO</p>	<p>NVRE- 2 OF 2</p>

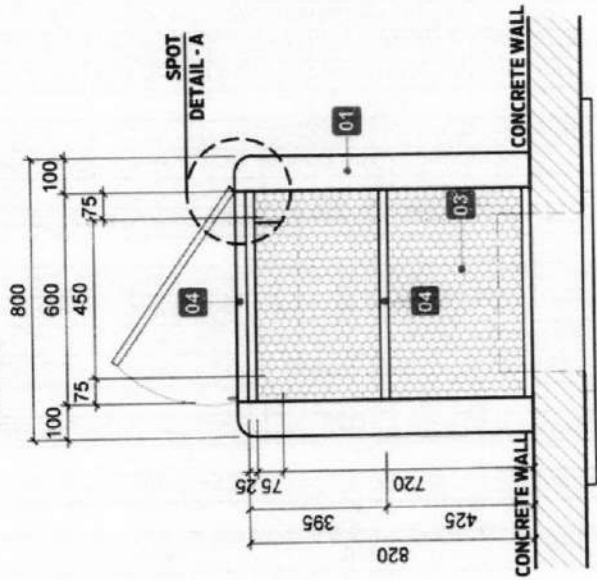
NOTES:
 1. WRITTEN DIMENSIONS ON THESE DRAWINGS SHALL HAVE PRECEDENCE OVER SCALED DIMENSIONS.
 2. CONTRACTOR/SUPPLIER SHALL VERIFY AND BE RESPONSIBLE FOR ALL DIMENSIONS AND CONDITIONS OF THE JOB.
 3. DISCREPANCIES BETWEEN DRAWINGS AND ACTUAL CONDITION MUST BE IMMEDIATELY FORWARDED TO PMED FOR RESOLUTION.

PROCASH 280 - 2018/ 2019 (DIMENSION)		
a	b	c
520mm	1090mm	715mm

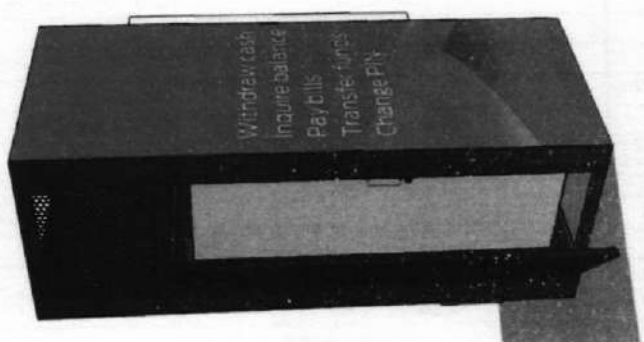
NOTE:
 • FOR VARIOUS ATM UNIT(S) PROVIDE 75mm CLEARANCE ON BOTH SIDES AND REAR FROM THE ENCLOSURE
 • VERIFY ATM UNIT DIMENSION UPON INSPECTION



FRONT ELEVATION
 SCALE 1:20 MTS





TOP VIEW
 SCALE 1:20 MTS



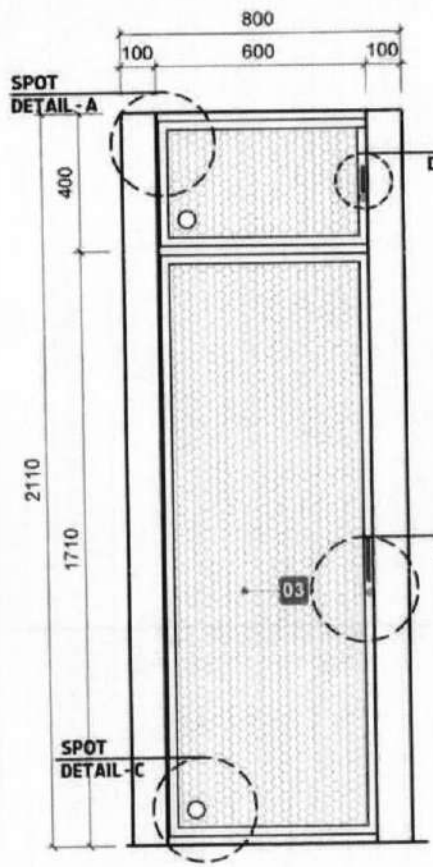
PERSPECTIVE

DESCRIPTION/ SPECIFICATIONS:

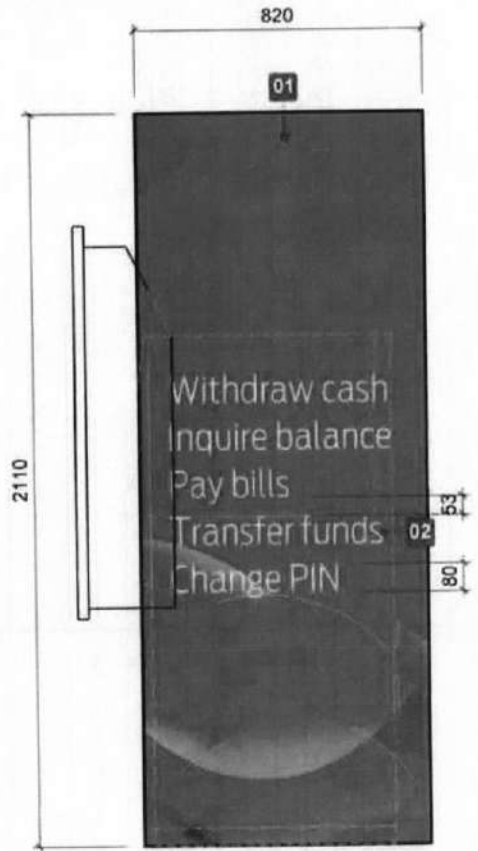
- 01. DIGITAL STICKER MOUNTED ON 6mm THK. ACRYLIC OPAQUE WHITE WITH 3M STICKER SCREWED TO 4mm THK ALUMINUM CEE SECTION
- 02. TRANSLUCENT FILM STICKERS WITH COMPUTER CUT-OUT LOGO AND LETTERS (FONT: ANTENNA CONDENSED- LIGHT)
- 03. G. A. 18 PERFORATED METAL SHEET ON POWDER COATED FINISH (COLOR: VIVID GREEN)
- 04. 1.2mm THK x 25mm x 25mm SQUARE TUBE FRAMING (COLOR:GREEN)

	<p>LAND BANK OF THE PHILIPPINES PROJECT MANAGEMENT & ENGINEERING DEPT. 1588 M.H. DEL PILAR ST., COR. DR. QUINTOS ST., MALATE MANILA</p>	<p>TITLE: STANDARD ITW-ATM ACRYLIC ENCLOSURE (DN PROCASH 280-2018/ 2019)</p>	<p>RECOMMENDING APPROVAL:  ENGR. D.J. SAMANIEGO HEAD, PMED</p>
<p>SHEET CONTENT: PERSPECTIVE TOP VIEW FRONT ELEVATION DESCRIPTION SPECIFICATIONS</p>		<p>DESIGN: JSU-PMED DRAWN: J.A. ALBERIA DATE: 26 November 2020 CHECKED: J.A. ALBERIA REVIEWED: JMSLANG</p>	<p>SHEET NO: A 1</p>

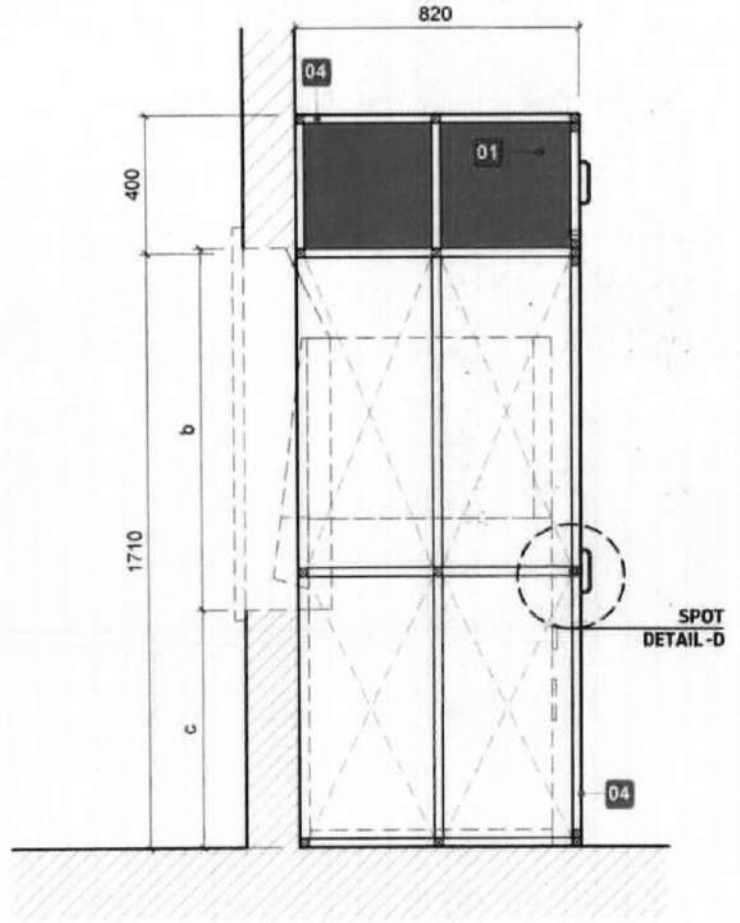
NOTES:
 * WRITTEN DIMENSIONS ON THESE DRAWINGS SHALL HAVE PRECEDENCE OVER SCALED DIMENSIONS
 * CONTRACTOR/SUPPLIER SHALL VERIFY AND BE RESPONSIBLE FOR ALL DIMENSIONS AND CONDITIONS OF THE JOB
 * DISCREPANCIES BETWEEN DRAWINGS AND ACTUAL CONDITION MUST BE IMMEDIATELY FORWARDED TO PMED FOR RESOLUTION



REAR ELEVATION
 SCALE 1:20 MTS





SIDE ELEVATION
 SCALE 1:20 MTS

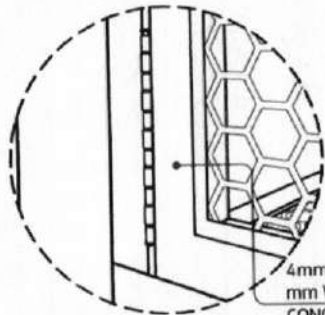


SECTION
 SCALE 1:20 MTS

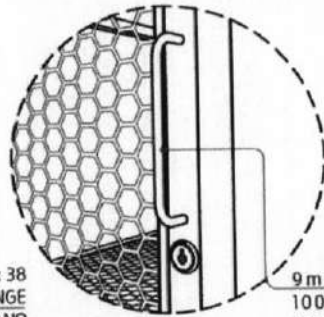
Revised Annex D-22

 <p>LAND BANK OF THE PHILIPPINES PROJECT MANAGEMENT & ENGINEERING DEPT. 1398 M.H. DEL PILAR ST., COR. DR. QUINTOS ST., MALATE, MANILA</p>	TITLE: <p>STANDARD TTW-ATM ACRYLIC ENCLOSURE (DN PROCASH 280-2018/ 2019)</p>	RECOMMENDING APPROVAL:  <p>ENDREJO D.J. SAMANIEGO HEAD, PMED</p>	SHEET CONTENT: <p>REAR ELEVATION SIDE ELEVATION SECTION</p>	DESIGN: TSU-PMED DRAWN: AEBORA DATE: 29 November 2020 CHECKED: M.PADUA REVIEWED: JMISLANG	SHEET NO: <div style="border: 1px solid black; border-radius: 50%; width: 40px; height: 40px; display: flex; align-items: center; justify-content: center; margin: 0 auto;"> A 2 </div>
	LANDBANK STANDARD DETAILS AND SPECIFICATIONS				

NOTES:
 • WRITTEN DIMENSIONS ON THESE DRAWINGS SHALL HAVE PRECEDENCE OVER SCALED DIMENSIONS
 • CONTRACTOR/SUPPLIER SHALL VERIFY AND BE RESPONSIBLE FOR ALL DIMENSIONS AND CONDITIONS OF THE JOB
 • DISCREPANCIES BETWEEN DRAWINGS AND ACTUAL CONDITION MUST BE IMMEDIATELY FORWARDED TO PMED FOR RESOLUTION



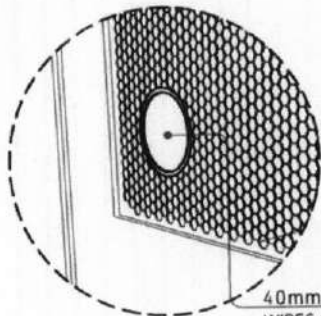
4mm Ø PIVOT x 1.2mm THK x 38 mm WIDTH HEAVY DUTY HINGE CONCEALED CONTINUOUS PIANO H I N G E



9mm Ø x 32mm x 100mm STAINLESS STEEL DOOR HANDLE

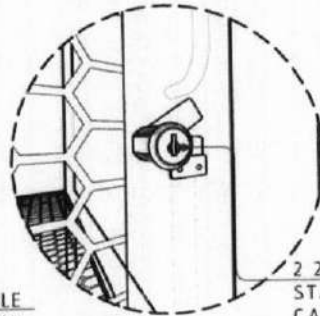
SPOT DETAIL-A

SPOT DETAIL-B



40mm Ø HOLE FOR CABLE WIRES (PROVIDE ESCUTCHEON PLATE AT THE EDGE OF HOLE)

SPOT DETAIL-C



22 - 24 mm Ø STAINLESS STEEL CAM LOCK WITH ACCESSORIES

SPOT DETAIL-D

ACCESSORIES DETAIL

TERMS OF REFERENCE:

- DURING THE WARRANTY PERIOD, THE EXPENSE SHALL BE SHOULDERS BY THE SUPPLIER WITH NO ADDITIONAL COST TO LANDBANK. WARRANTY CERTIFICATE SHALL BE AS FOLLOWS:
 - 5 YEARS ON TRANSLUCENT FILM AGAINST DISCOLORATION/COLOR FADING AND STICKER ADHESION.
 - 5 YEARS AGAINST BLOW-OUT AND MILDEW RESISTANCE
 - 1 YEAR AGAINST ANY DEFECT IN PRODUCT OR WORKMANSHIP
- SUPPLIER SHALL SUBMIT DETAILED DRAWINGS TO BE PRINTED ON AN A4 SIZE PAPER WITH THE SUPPLIER'S OFFICIAL LETTERHEAD AND SIGNED BY AN AUTHORIZED REPRESENTATIVE.
- SUPPLIER TO SUBMIT A PROTOTYPE/ MOCK-UP UNIT, AS BASIS IN THE POST-QUALIFICATION EVALUATION.
- SUPPLIER SHALL VERIFY THE ACTUAL DIMENSIONS ON SITE. DISCREPANCIES BETWEEN THE PLANS AND ACTUAL DIMENSIONS SHALL BE FORWARDED IMMEDIATELY TO PMED FOR RESOLUTION.
- SUPPLIER SHALL SUBMIT SHOP DRAWINGS OF THE PROPOSED SIGNAGES, BASED ON AND REFLECTING THE ACTUAL SITE CONDITION WITH COMPLETE DIMENSIONS AND DESCRIPTION OF PARTS AND COMPONENTS, FOR PMED APPROVAL PRIOR TO FINAL FABRICATION/ INSTALLATION.
- ONCE BOTH THE PROTOTYPES AND THE SHOP DRAWINGS ARE APPROVED, SUPPLIER SHALL COORDINATE WITH THE END-USER FOR THE SCHEDULE OF MOBILIZATION/ DELIVERY OF THE SAID ITEM AND TO SECURE ANY CLEARANCES, IF ANY.
- SUPPLIER SHALL SUBMIT (AS PART OF THE DOCUMENTARY REQUIREMENTS) TO PMED THE PHOTOS OF ACTUAL INSTALLED ITEMS (CLOSE-UP AND DIFFERENT VIEWS OF THE SAID ITEM) FOR PROPER ISSUANCE OF CERTIFICATE OF SATISFACTORY PERFORMANCE.

GENERAL NOTES:

- TEXT STICKERS MAY BE UV PRINTED ON THE TRANSLUCENT FILM OR GRAPHICALLY CUT WITH A COMPUTER CUTTER (MANUAL CUTTING SHALL NOT BE ALLOWED NOR ACCEPTED). IF THE LATTER, APPLICATION SHALL BE SEAMLESS WITH LAMINATION ON TOP.

SPECIFICATIONS:

I. TRANSLUCENT STICKERS

ITEM	
Type	matte-surface translucent cast vinyl films
Thickness	without adhesive - 2 mils (minimum) or 50.8 micron with adhesive - 3 mils (minimum) or 76.20 micron

II. BUILT-UP ACRYLIC SIDE PANELS

ITEM	
Type	6mm thk. acrylic opaque white

III. FRAME AND BACKING

ITEM	
Framing	1.2mm thk. x 25mm x 25mm Square Tube Framing
Rear Portion	G.A. 18 Perforated Metal Sheet on Powder-coated Finish

Revised Annex D-29



LAND BANK OF THE PHILIPPINES
 PROJECT MANAGEMENT & ENGINEERING DEPT.
 1588 M.H. DEL PILAR ST., COR. DR. QUINTOS ST., MALATE, MANILA

TITLE:
**STANDARD TW-ATM ACRYLIC ENCLOSURE
 (DN PROCASH 280-2018/ 2019)**

LANDBANK STANDARD DETAILS AND SPECIFICATIONS

RECOMMENDING APPROVAL:
 6 2

ENRICO D.J. SAMANIEGO
 HEAD, PMED

SHEET CONTENT:
 ACCESSORIES DETAIL
 GENERAL NOTES
 SPECIFICATIONS

DESIGN: TSU-PMED
 DRAWN: AEBORA
 DATE: 25 November 2020
 CHECKED: M.PADUA
 REVIEWED: J.MISLANG

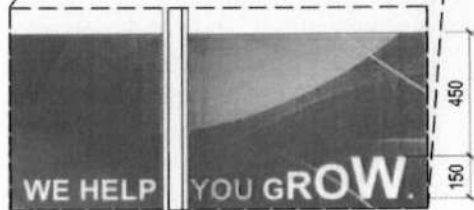
SHEET NO:
**A
 3**

CLASS D



DETAILED ELEVATION

SCALE 1:80 M



BLOW-UP DETAIL

SCALE 1:25 M

TERMS OF REFERENCE/ GENERAL NOTES:

- a. SUPPLIER MUST BE AN AUTHORIZED CONVERTER OF THE BRAND OF TRANSLUCENT FILM AND SHOULD PROVIDE CERTIFICATION FROM THE MANUFACTURER (I.E. 3M OR AVERY, ETC.).
- b. SUPPLIER TO SUBMIT WARRANTY CERTIFICATE FOR 3 YEARS FOR THE ITEM.
- c. SUPPLIER SHALL PROVIDE A PROOF OF EACH MATERIAL FOR APPROVAL PRIOR TO SIGNAGE PRODUCTION.
- d. FINAL STICKER APPLICATION SHOULD NOT HAVE ANY VISIBLE AIR POCKETS OR BUBBLES.

- e. SUPPLIER TO SUBMIT SHOP DRAWINGS AND MOCK-UP UNIT TO PMED FOR POST QUALIFICATION EVALUATION PRIOR TO PRODUCTION/ FABRICATION. SAME MUST BE PRINTED ON A4 SIZE PAPER WITH THE SUPPLIER'S OFFICIAL LETTERHEAD.
- f. WRITTEN DIMENSION ON THE DRAWINGS SHALL HAVE PRECEDENCE OVER SCALED DIMENSIONS.
- g. SUPPLIER TO SUBMIT (AS PART OF THE DOCUMENTARY REQUIREMENTS) TO PMED THE PHOTOS OF ACTUAL INSTALLED ITEMS. (CLOSE-UP AND FULL VIEW OF THE SAID ITEMS)

FONT GUIDE

WE HELP YOU GROW. ARIAL BLACK 75 mm-150 mm

DESCRIPTION/ SPECIFICATION

01- PERFORATED STICKERS TWO-WAY VISION (LAMINATED)

COLOR GUIDE

01- GOLD GOLD (PANTONE NO. 130C)
02- WHITE OPAQUE WHITE (PANTONE NO.11-06 TCX)

NOTE: APPROVED PER MANCOM RESOLUTION NO. 2020-(05)-33

 <p>LAND BANK OF THE PHILIPPINES PROJECT MANAGEMENT & ENGINEERING DEPT. 1598 M.H. DEL PILAR ST., CORNER DR. QUINTOS ST., MALATE, MANILA</p>	<p>PROJECT TITLE:</p> <p>LANDBANK STANDARD ONE (1) - METER WIDE GLASS FACADE STRIP STICKER</p> <p>LANDBANK STANDARD DETAILS AND SPECIFICATIONS</p>	<p>APPROVED BY:</p> <p><i>Enrico D.J. Samaniego</i> ENRICO D.J. SAMANIEGO HEAD, PMED</p>	<p>SHEET NO:</p> <p>DETAILED ELEVATION BLOW-UP DETAIL FONT GUIDE COLOR GUIDE DESCRIPTION/ SPECIFICATION TERMS OF REFERENCE/ GENERAL NOTES</p>	<p>DESIGN: PMED-TSU</p> <p>DRAWN: A.EBORA</p> <p>DATE: June 22, 2020</p> <p>CHECKED: M.PADUA</p> <p>REVIEWED: J. MISLANG</p>	<p>SHEET NO:</p> <p>A-1</p> <p>1-555-01</p>
	<p>REVISIONS:</p>				

Revised Annex D-24

CLASS D

COLOR GUIDE

GREEN VIVID GREEN (PANTONE NO.355C) or 355c or 3M Vivid Green (3630-156) or AVERY Forest Green (5560-QM) or approved equal

WHITE BRIGHT WHITE (PANTONE NO.11-0601 TCX) or 3M White (3630-20) or AVERY White (5500-QM) or approved equal

FONT GUIDE

ATM	ANTENNA CONDENSED BOLD	170mm
24-HOUR SERVICE	ANTENNA CONDENSED BOLD	70mm
CDM	ANTENNA CONDENSED BOLD	170mm
CASH DEPOSIT MACHINE	ANTENNA COND-BOLD	70mm

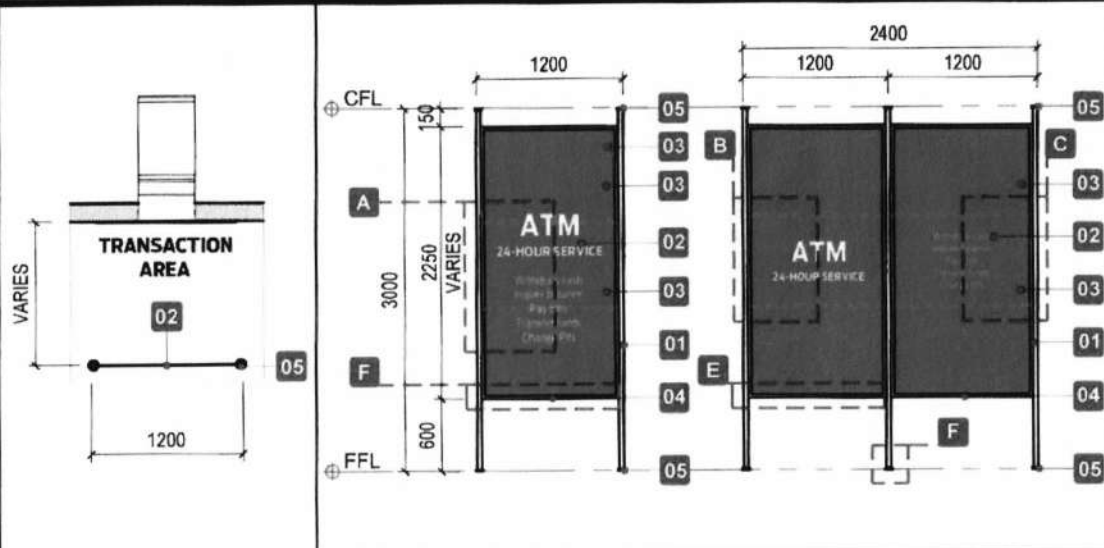
Withdraw cash	ANTENNA CONDENSED LIGHT	60mm
Inquire balance	ANTENNA CONDENSED LIGHT	60mm
Pay bills	ANTENNA CONDENSED LIGHT	60mm
Transfer funds	ANTENNA CONDENSED LIGHT	60mm
Change PIN	ANTENNA CONDENSED LIGHT	60mm

DESCRIPTION/ SPECIFICATION

- 01- 38mm Ø X 2.4mm THK STAINLESS STEEL PIPE WITH HOLE FOR 10mm Ø L-SHAPED ROUND BAR
- 02- 6mm THK. GREEN POLYCARBONATE SOLID SHEET WITH TRANSLUCENT FILM STICKER FOR COMPUTER CUT-OUT LETTERS AND LOGO TOPPED WITH LAMINATION (SEE STICKER COLOR GUIDE).
- 03- 2-3mm THK X 25mm STAINLESS FLAT BAR HORIZONTAL STIFFENER (TO BE PLACED AT REAR ELEVATION)
- 04- 1.5mm THK X 25mm X 6mm STAINLESS U-CHANNEL
- 05- STAINLESS SLIP ON FLANGE SET WITH 4 - 6mm Ø X 1-1/2" SCREW AND SLOT FOR 10mm Ø ROUND BAR
- 06- 10mm Ø ROUND BAR

NOTE:
 - ALL WELDED CONNECTIONS MUST BE FULL-WELDED USING AISI/ NSCP RECOMMENDED FILLER MATERIALS.
 - THE WORD "ATM 24-HOUR SERVICE" SHALL BE REPLACED WITH THE WORD "CDM CASH DEPOSIT MACHINE", ONLY WHEN THERE IS A CDM UNIT INSTALLED. BUT IF NONE, THE PRIOR SHALL BE RETAINED.

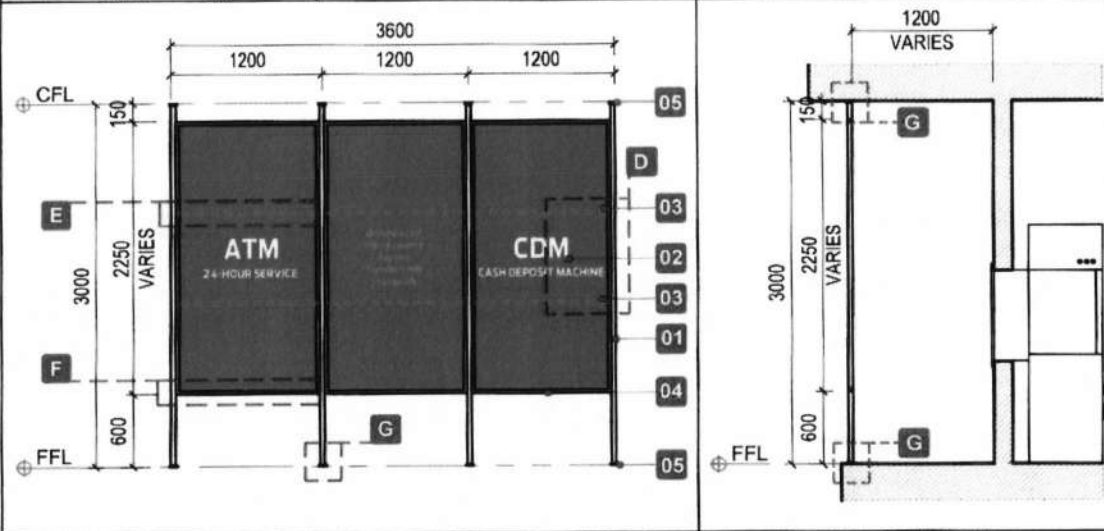
FINISH:
 ALL EXPOSED STAINLESS STEEL SURFACE AND CONNECTION MUST BE BUFFED AND POLISHED AND SHALL BE FREE FROM SCRATCHES AND DENTS.



PLAN
SCALE: 1:60

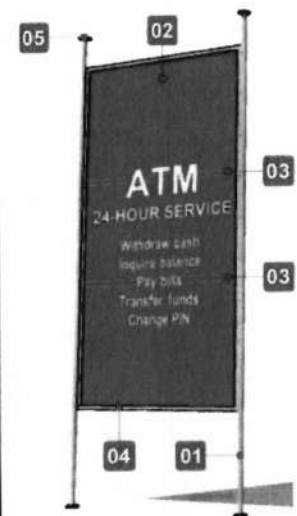
SINGLE PANEL ELEVATION

TWO-PANEL ELEVATION



THREE-PANEL WITH CDM ELEVATION

SECTION
SCALE: 1:40



PERSPECTIVE

Revised 0-25 mmx



LAND BANK OF THE PHILIPPINES
 PROJECT MANAGEMENT & ENGINEERING DEPT.
 1598 M.H. DEL PILAR ST., CORNER DR. QUINTOS ST., MALATE, MANILA

PROJECT TITLE:
STANDARD ATM SUNSHADE (DEMOUNTABLE TYPE)
 LANDBANK STANDARD DETAILS AND SPECIFICATIONS

APPROVED BY:

ENRICO D.J. SAMANIEGO
 HEAD, PMED

SHEET CONTENT:
 PERSPECTIVE
 PLAN
 SINGLE PANEL ELEVATION
 TWO-PANEL ELEVATION
 THREE-PANEL WITH CDM ELEVATION
 SECTION
 COLOR GUIDE
 FONT GUIDE
 DESCRIPTION/SPECIFICATION
 NOTE
 FINISH

DESIGN: TSU-PMED
 REVISED: In A. EBORA
 DATE: 22 July 2021
 CHECKED: M. PADUA
 REVIEWED BY: MISLANG

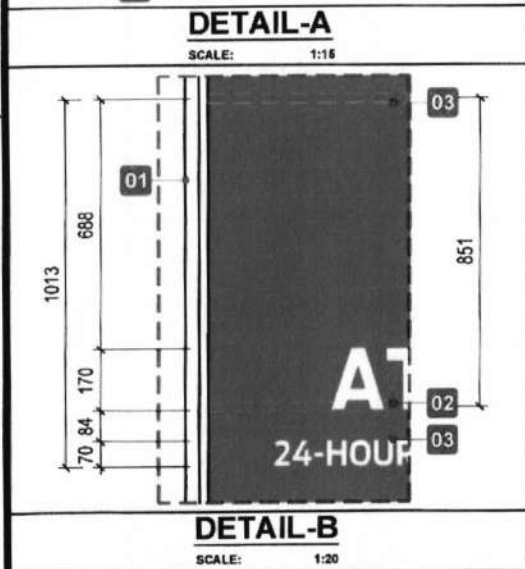
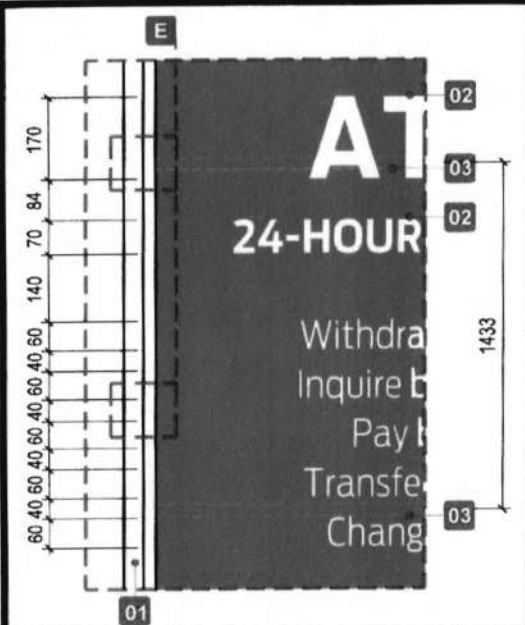
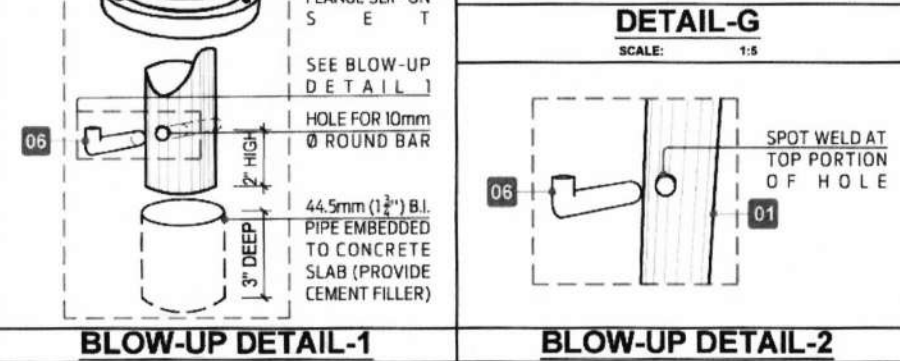
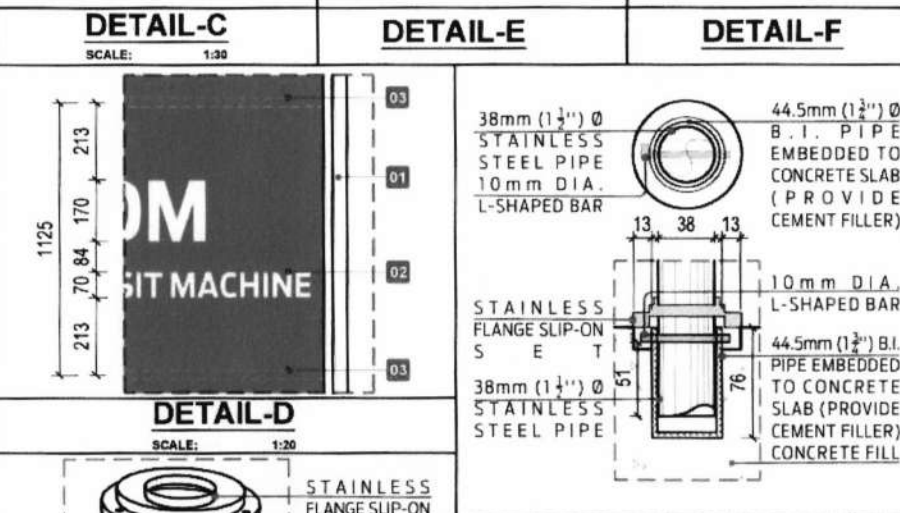
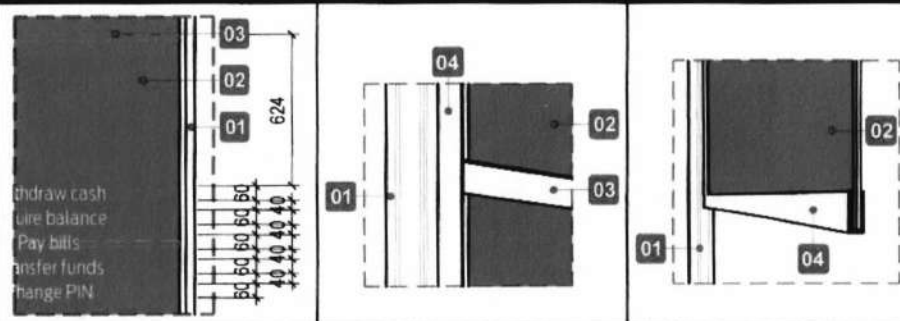
SHEET NO:
A-1
 1-AS-01

TERMS OF REFERENCE:


- SUPPLIER'S WARRANTY/ CERTIFICATION SHALL INCLUDE THE FOLLOWING:
 - A. 5 YEARS ON POLYCARBONATE AGAINST DISCOLORATION/COLOR FADING AND STICKER ADHESION.
 - B. 1 YEAR AGAINST ANY DEFECT IN PRODUCT OR WORKMANSHIP
 (EXPENSES OF REPLACEMENT OR REPAIR OF THE ABOVE ITEM'S WARRANTY SHALL BE SHOULDERED BY THE SUPPLIER).
- SUPPLIER SHALL SUBMIT DETAILED DRAWINGS TO BE PRINTED ON AN A4 SIZE PAPER WITH THE SUPPLIER'S OFFICIAL LETTERHEAD AND SIGNED BY AN AUTHORIZED REPRESENTATIVE.
- SUPPLIER TO SUBMIT MATERIAL SAMPLES OF THE GREEN SOLID POLYCARBONATE, PRIOR SUBMITTING THE PROTOTYPE/ MOCK-UP UNIT, AS BASIS IN THE POST-QUALIFICATION EVALUATION.
- SUPPLIER SHALL VERIFY THE ACTUAL DIMENSIONS ON SITE. DISCREPANCIES BETWEEN THE PLANS AND ACTUAL DIMENSIONS SHALL BE FORWARDED IMMEDIATELY TO PMED FOR RESOLUTION.
- SUPPLIER SHALL SUBMIT SHOP DRAWINGS OF THE PROPOSED SIGNAGES, BASED ON AND REFLECTING THE ACTUAL SITE CONDITION WITH COMPLETE DIMENSIONS AND DESCRIPTION OF PARTS AND COMPONENTS, FOR PMED APPROVAL PRIOR TO FINAL FABRICATION/ INSTALLATION.
- ONCE BOTH THE PROTOTYPES AND THE SHOP DRAWINGS ARE APPROVED, SUPPLIER SHALL COORDINATE WITH THE END-USER FOR THE SCHEDULE OF MOBILIZATION/ DELIVERY OF THE SAID ITEM AND TO SECURE ANY CLEARANCES, IF ANY.
- SUPPLIER SHALL SUBMIT (AS PART OF THE DOCUMENTARY REQUIREMENTS) TO PMED THE PHOTOS OF ACTUAL INSTALLED ITEMS (CLOSE-UP AND DIFFERENT VIEWS OF THE SAID ITEM) FOR PROPER ISSUANCE OF CERTIFICATE OF SATISFACTORY PERFORMANCE.

GENERAL NOTES:

- GRAPHICS CUTTING OF STICKER SHALL BE DONE WITH COMPUTER CUTTER (MANUAL CUTTING SHALL NOT BE ALLOWED NOR ACCEPTED).
- INSTALLATION OF CUT-OUT STICKER TO POLYCARBONATE SOLID SHEET SHALL BE SEAMLESS WITH LAMINATION ON TOP OF TEXT.

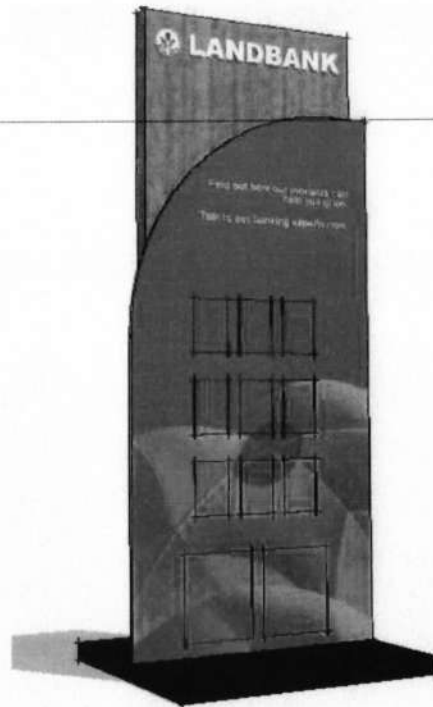


Revised Annex D-24

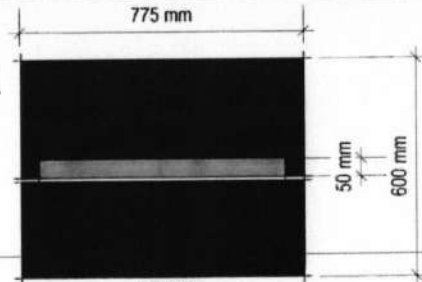
 <p>LAND BANK OF THE PHILIPPINES PROJECT MANAGEMENT & ENGINEERING DEPT. 1598 M.H. DEL PILAR ST., CORNER DR. QUINTOS ST., MALATE, MANILA</p>	<p>PROJECT TITLE:</p> <p align="center">STANDARD ATM SUNSHADE (DEMOUNTABLE TYPE)</p> <p align="center">LANDBANK STANDARD DETAILS AND SPECIFICATIONS</p>	<p>APPROVED BY:</p> <p align="center"><i>Enrico D. Samaniego</i> ENRICO D.J. SAMANIEGO HEAD, PMED</p>	<p>SHEET CONTENT:</p> <p>DETAIL-A DETAIL-B DETAIL-C DETAIL-D DETAIL-E DETAIL-F DETAIL-G BLOW-UP DETAIL 1 BLOW-UP DETAIL 2 TERMS OF REFERENCE GENERAL NOTES</p>	<p>DESIGN: TSU-PMED</p> <p>REVISED: <i>In</i> A.EBORA</p> <p>DATE: 22 May 2021</p> <p>CHECKED: <i>MA</i> M.PADUA</p> <p>REVIEWED BY: <i>X</i> J.MSLANG</p>	<p>SHEET NO:</p> <p align="center">A-2</p> <p align="center">1-AS-01</p>

CLASS D

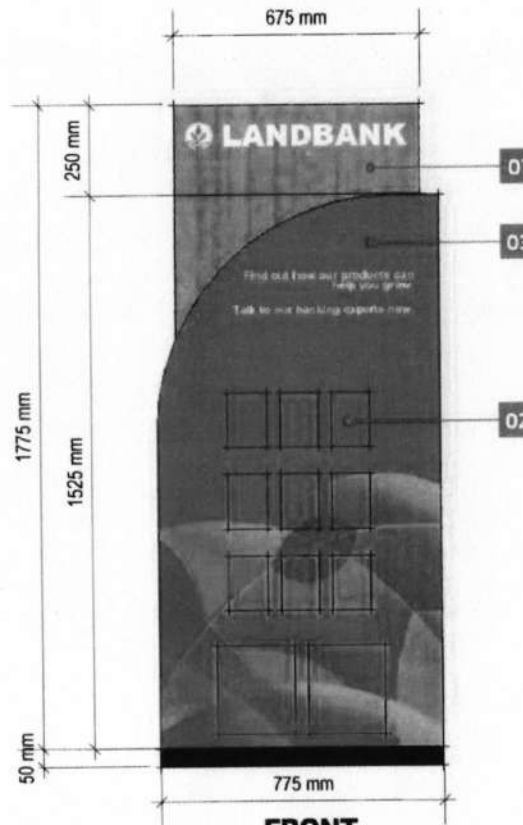
- NOTES:**
- WRITTEN DIMENSIONS ON THESE DRAWINGS SHALL HAVE PRECEDENCE OVER SCALED DIMENSIONS.
 - CONTRACTOR/SUPPLIER SHALL VERIFY AND BE RESPONSIBLE FOR ALL DIMENSIONS AND CONDITIONS OF THE JOB.
 - **PMED** MUST BE NOTIFIED IMMEDIATELY OF ANY VARIATIONS FROM THE DIMENSIONS AND CONDITIONS SHOWN IN THESE DRAWINGS.
 - FOR APPROVAL BEFORE PRODUCTION, CONTRACTOR/SUPPLIER SHALL SUBMIT DETAILED DRAWING AND MOCK-UP UNIT TO **PMED** ONCE.



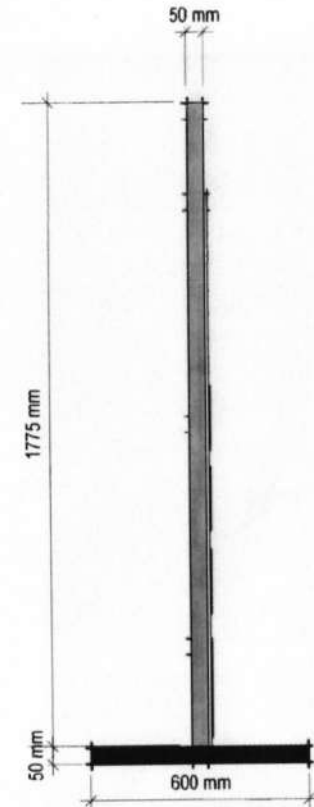
PERSPECTIVE



TOP
SCALE: 1:20mm



FRONT
SCALE: 1:20mm



LEFT-SIDE ELEVATION

SCALE: 1:20mm REV. 1(09-04-2018)

SPECIFICATIONS:

- 01** - ALUMINUM COMPOSITE PANEL (ACP) CLADDING WITH WOODEN DESIGN LAMINATE
- SELF ADHESIVE DECORATIVE VINYL #1393.
 - 02** - ACRYLIC BROCHURE (4.25"x6") AND MAGAZINE HOLDER (8.5" x 9.69") - CLEAR 3mm ACRYLIC
(REFER TO DETAILED DRAWING BELOW)
 - 03** - STICKER: WHITE AVERY 450-016 ON 2" ALUMINUM.
- **NOTE:** A LOGO KIT (CONSISTING OF THE STANDARD DESIGN FOR SIGNAGE, AND LOGO/ LOGO TYPE ILLUSTRATION IN HARD AND SOFT COPIES) WILL BE PROVIDED BY CAD TO SUPPLIER TO WHICH THEY SHOULD ADHERE.

Revised Annex
D-27



**LAND BANK OF THE PHILIPPINES
PROJECT MANAGEMENT & ENGINEERING DEPT.**

1598 M.H. DEL PILAR ST., CORNER DR. QUINTOS ST., MALATE MANILA

TITLE:	BROCHURE RACK
RECOMMENDING APPROVAL:	ENRICO DJ. SAMANIEGO HEAD, PMED
LANDBANK STANDARD DETAILS & SPECIFICATIONS	

DESIGN:	PMED - TSU
DRAWN:	PMED - TSU
DATE:	02-Sept-2026
CHECKED:	MLPADUA
REVIEWED:	J. MISLANG

SHEET NO:	BR 10F2
-----------	------------

NOTES:

- WRITTEN DIMENSIONS ON THESE DRAWINGS SHALL HAVE PRECEDENCE OVER SCALED DIMENSIONS.
- CONTRACTOR/SUPPLIER SHALL VERIFY AND BE RESPONSIBLE FOR ALL DIMENSIONS AND CONDITIONS OF THE JOB.
- **PMED** MUST BE NOTIFIED IMMEDIATELY OF ANY VARIATIONS FROM THE DIMENSIONS AND CONDITIONS SHOWN IN THESE DRAWINGS.
- FOR APPROVAL BEFORE PRODUCTION, CONTRACTOR/SUPPLIER SHALL SUBMIT DETAILED DRAWING AND MOCK-UP UNIT TO **PMED** ONCE.

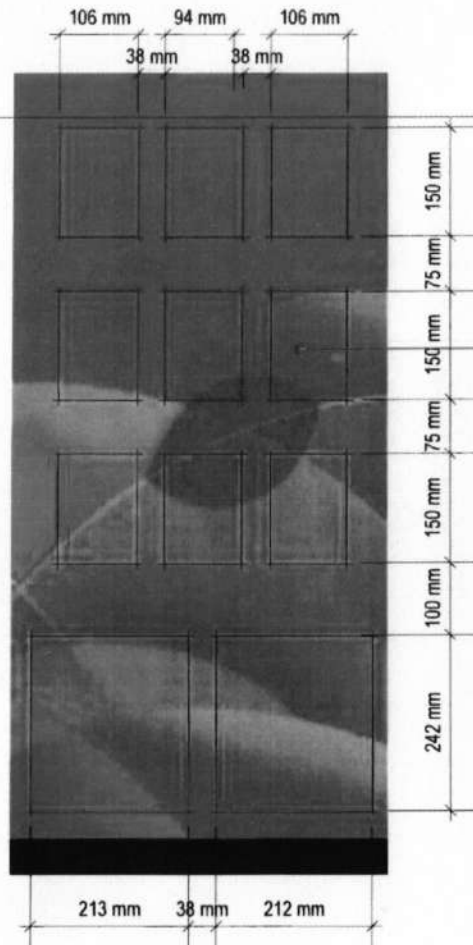
CLASS D

GENERAL NOTES:

- A.** SUPPLIER SHALL PROVIDE A WARRANTY FOR FULL THREE (3) YEARS ON THE WHITE- AVERY 450-016 ADHESIVENESS AND DURABILITY AND THREE (3) YEARS WARRANTY AGAINST ANY DEFECT IN PRODUCT AND WORKMANSHIP.
- B.** FINAL STICKER APPLICATION SHOULD NOT HAVE ANY VISIBLE AIR POCKETS OR BUBBLE
- C.** LAYERED FILES OF ARTWORK FOR PRINTING WILL BE PROVIDED BY LANDBANK TO THE SUPPLIER.
- D.** GRAPHICS CUTTING OF TRANSLUCENT FILM SHALL BE DONE WITH COMPUTER CUTTER (MANUAL CUTTING SHALL NOT BE ALLOWED AND ACCEPTED).
- E.** SUPPLIER TO SUBMIT DETAILED DRAWING AND PROTOTYPE FOR APPROVAL ONCE PRIOR TO PRODUCTION. IT MUST BE PRINTED ON A4 SIZE PAPER WITH THE SUPPLIER'S OFFICIAL LETTERHEAD.
- F.** THE PROTOTYPE/ MOCK-UP UNIT SHALL BE INSPECTED BY A PMED REPRESENTATIVE BEFORE PRODUCTION.
- G.** FOR THE SUCCEEDING PROJECTS AND ISSUANCE OF CERTIFICATE OF SATISFACTORY OF PERFORMANCE, SUPPLIER MUST SUBMIT ACTUAL PHOTOS OF ITEM INSTEAD, WITH DIFFERENT VIEWS, BEFORE AND AFTER DELIVERY.
- H.** ALL NECESSARY PERMITS/ REQUIREMENTS MUST BE SECURED BY THE SUPPLIER PRIOR TO INSTALLATION.
- I.** SUPPLIER TO COORDINATE WITH THE END-USER FOR THE SCHEDULE OF MOBILIZATION/ DELIVERY OF SAID ITEM.

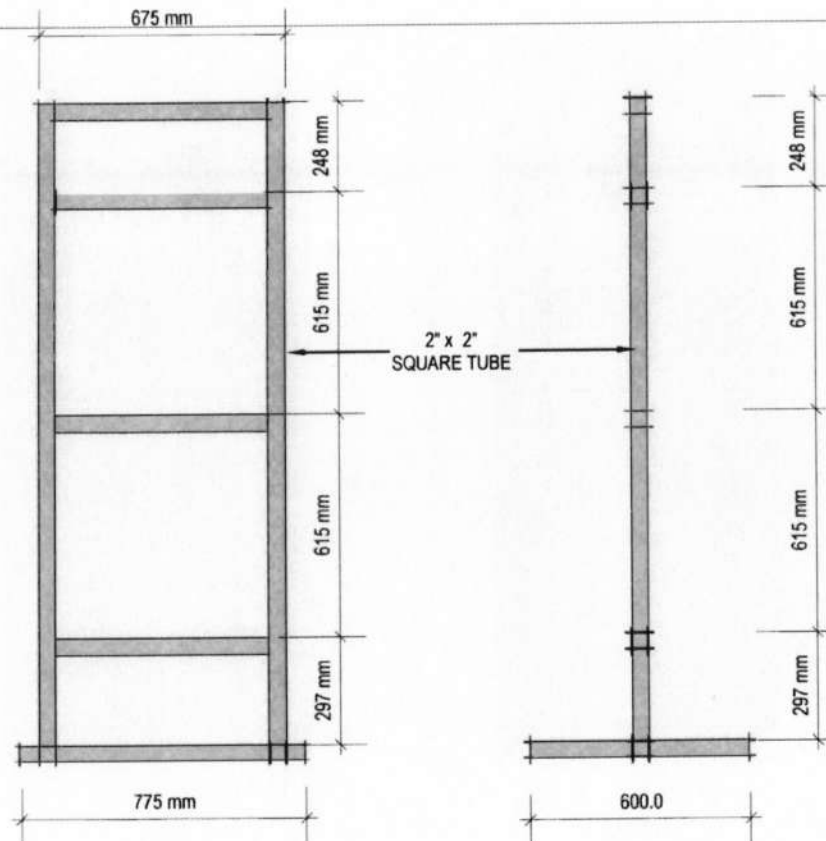
REV. 1(09-04-2018)

Revised Annex D-208



MAGAZINE HOLDER

BLOW-UP
SCALE: 1:20mm



SECTION -A

FRAMING DETAIL
SCALE: 1:20mm

SECTION -B



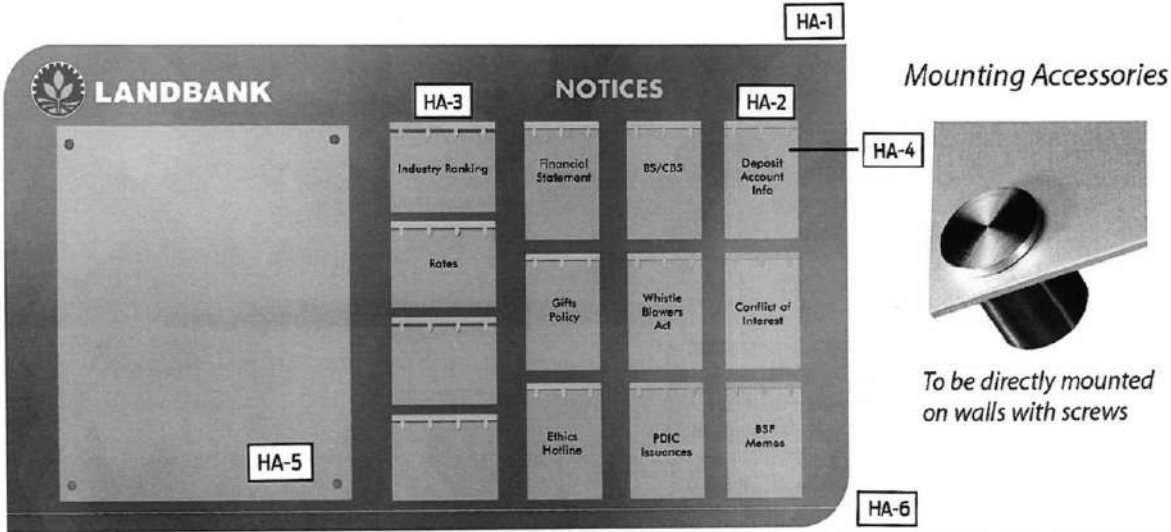
LAND BANK OF THE PHILIPPINES
PROJECT MANAGEMENT & ENGINEERING DEPT.
1598 M.H. DEL PILAR ST., CORNER DR. QUINTOS ST., MALATE MANILA

TITLE:	RECOMMENDING APPROVAL:
BROCHURE RACK	<i>Enrico D. Samaniego</i> ENRICO D.J. SAMANIEGO HEAD, PMED
LANDBANK STANDARD DETAILS & SPECIFICATIONS	

DESIGN:	PMED - TSU	SHEET NO: BR 2 OF 2
DRAWN:	PMED - TSU	
DATE:	02-Sept-2020	
CHECKED:	M.PADUA	
REVIEWED:	J. MISLANG	

HORIZONTAL BULLETIN BOARD OPTION A

Orientation: Horizontal
 Standard Size: 4 ft. (height) x 7 ft. (width)
 Mounting: Wall Mounted (ideal for branches and EOs with vacant concrete or wooden walls)



Mounting Accessories

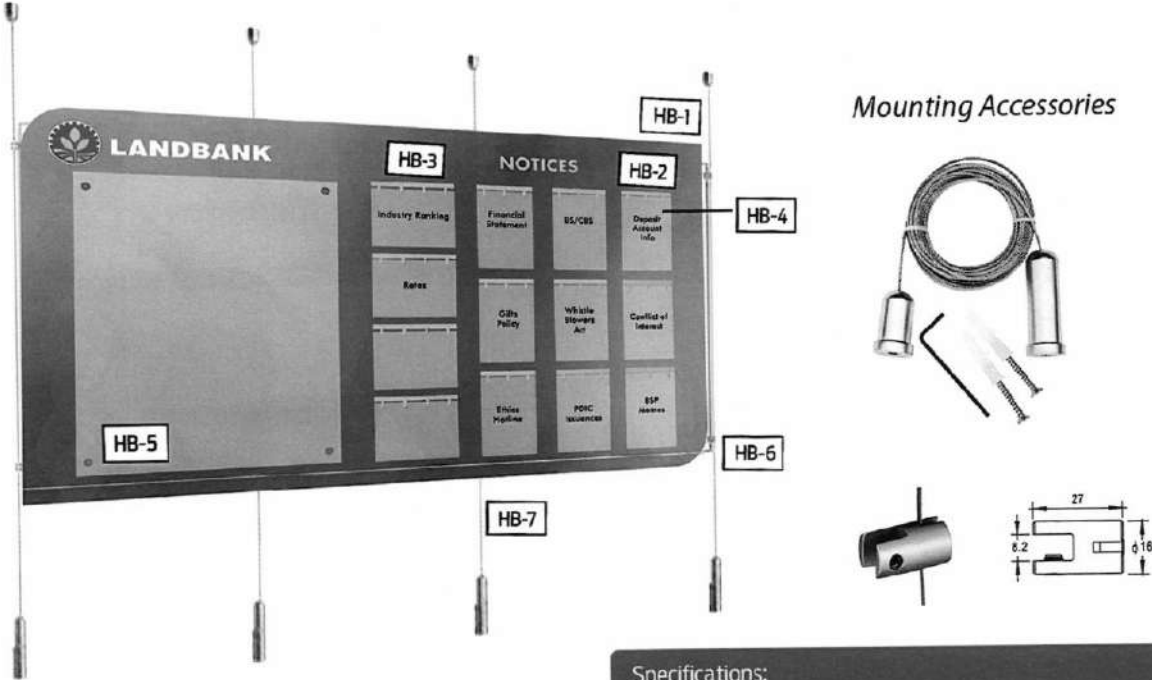


To be directly mounted on walls with screws

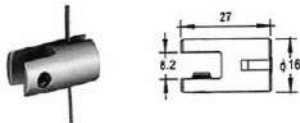
Specifications:
 A) HA - 1: Base - Direct Digital Colored printing on 6mm sintra board with matte lamination
 B) HA - 2: Binder Clip - by 2s
 C) HA - 3: Binder Clip - by 3s
 D) HA - 4: A4 Acrylic Cover (1 layer/sheet only)
 E) HA - 5: 3mm clear acrylic poster holder with 4pcs peg screws (15x40mm)
 F) HA - 6: 6 inches radius

HORIZONTAL BULLETIN BOARD OPTION B

Orientation: Horizontal
 Standard Size: 4 ft. (height) x 7 ft. (width)
 Mounting: Hang (ideal for branches and EOs without vacant concrete or wooden walls e.g. glasses)



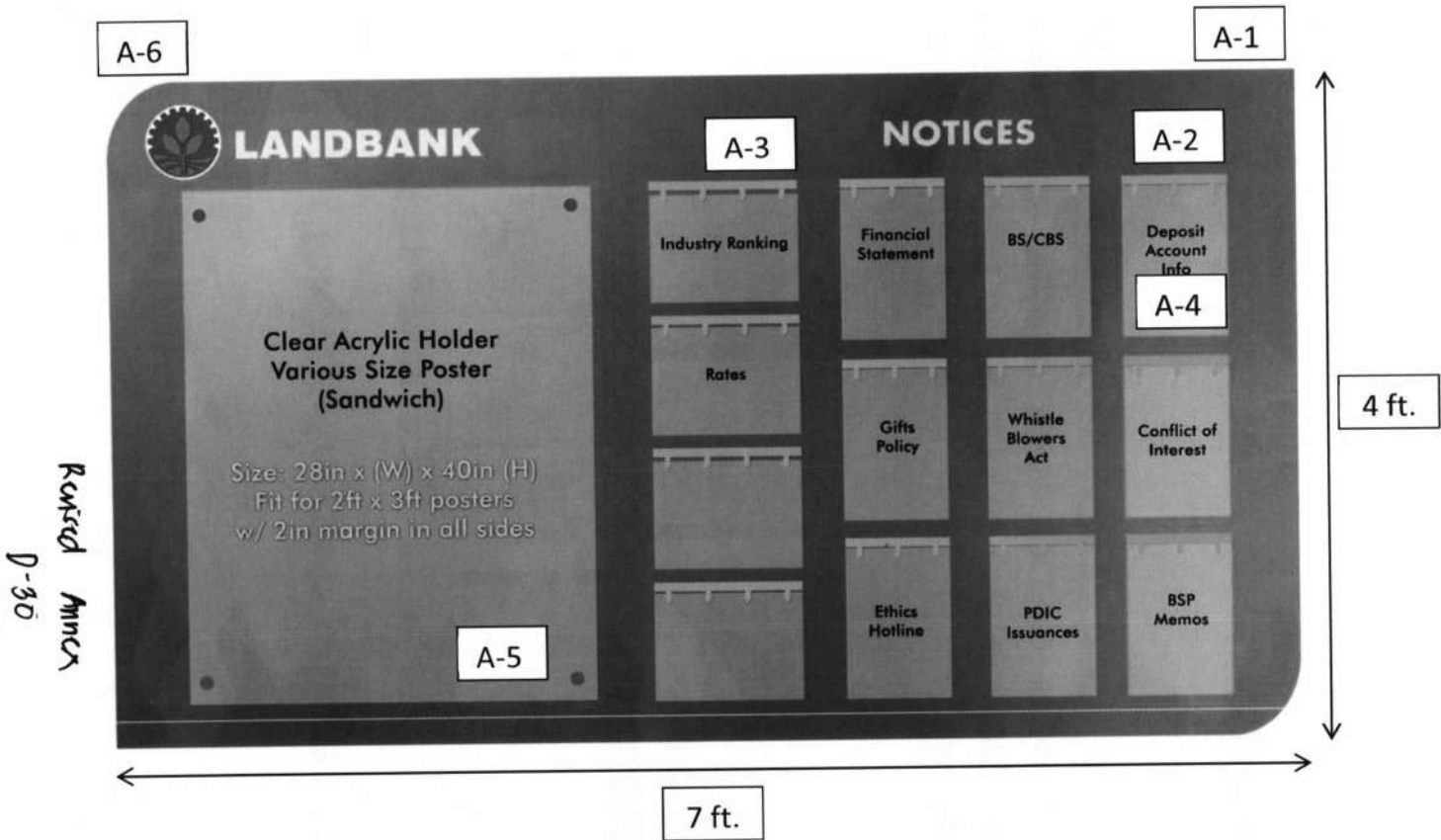
Mounting Accessories



Specifications:
 A) HB - 1: Base - Direct Digital Colored printing on 6mm sintra board with matte lamination
 B) HB - 2: Binder Clip - by 2s
 C) HB - 3: Binder Clip - by 3s
 D) HB - 4: A4 Acrylic Cover (1 layer/sheet only)
 E) HB - 5: 3mm clear acrylic poster holder with 4pcs peg screws (15x40mm)
 F) HB - 6: 6 inches radius
 G) HB - 7: Mounting Accessories (Tension wire)

Revised Annex D-29

Bulletin Board (Wall Mounted)

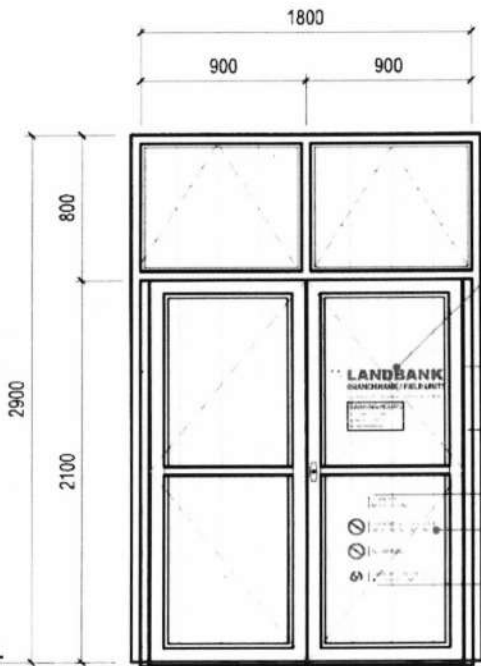
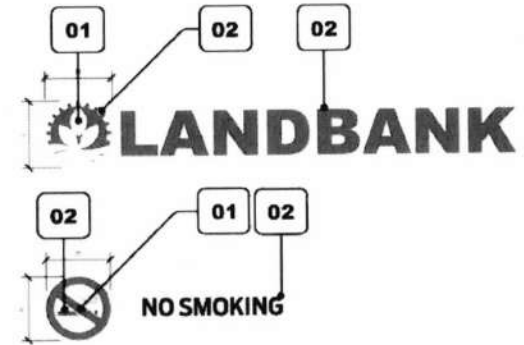


Specifications:

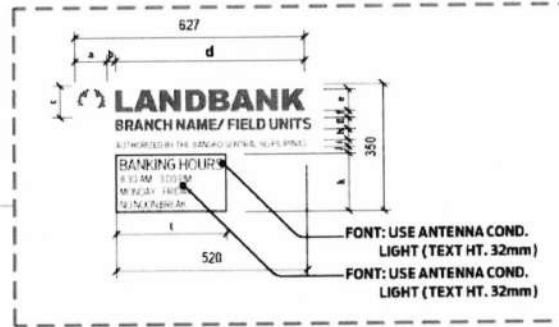
- A) A-1 Base - Direct colored printing 6mm sintra board
- B) A-2 Binder Clip - by 2s
- C) A-3 Binder Clip - by 3s
- D) A-4 A4 size clear acetate film for cover
- E) A-5 3mm clear acrylic poster holder with 4 pcs. peg screws (15 x 40 mm)
- F) A-6 6 inches radius

Note: Final artworks/designs of materials for printing will be provided by LANDBANK to the supplier

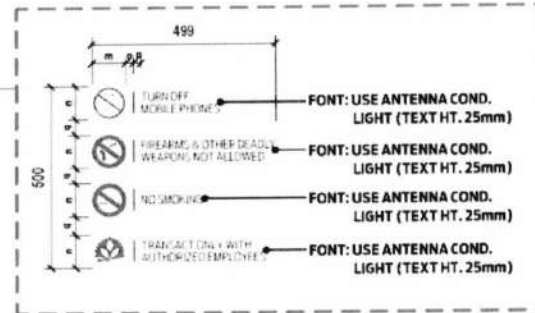
- NOTES:**
- WRITTEN DIMENSIONS ON THESE DRAWINGS SHALL HAVE PRECEDENCE OVER SCALED DIMENSIONS.
 - CONTRACTOR/SUPPLIER SHALL VERIFY AND BE RESPONSIBLE FOR ALL DIMENSIONS AND CONDITIONS OF THE JOB.
 - DISCREPANCIES BETWEEN DRAWINGS AND ACTUAL CONDITION MUST BE IMMEDIATELY FORWARDED TO PMED FOR RESOLUTION.



ELEVATION
SCALE: 1:40 M



BLOW-UP DETAIL-A
SCALE: 1:20 M



BLOW-UP DETAIL-B
SCALE: 1:20 M

LEGEND		FONT TYPE	
a	87mm	LANDBANK	- ARIAL BLACK
b	23mm		
c	87mm	BRANCH NAME/ FIELD UNITS (LC/AC)	- ANTENNA CONDENSED-BOLD
d	57mm		
e	60mm	AUTHORIZED BY THE BANKO SENTRAL NG PILIPINAS	- ANTENNA CONDENSED- LIGHT
f	19mm		
g	30mm		
h	30mm		
i	18mm		
j	18mm	COLOR GUIDE	
k	160mm		
l	300mm	01- COMPUTER CUT-OUT LOGO	02 - WHITE - PLAIN SUBSTRATE SURFACE
m	91mm		
n	91mm		
o	20mm		
p	20mm		
q	4750mm		

PHYSICAL PROPERTIES	
FILM	CAST VINYL
COLOR	WHITE
GLOSS	HIGH GLOSS
FILM THICKNESS	WITHOUT ADHESIVES: 4 MILS (0.10 MM) WITH ADHESIVES: 5-6 MILS (0.13 - 0.15 MM)
ADHESIVE	PRESSURE SENSITIVE, REMOVABLE
ADHESIVE COLOR	CLEAR
TENSILE STRENGTH	4.2 POUNDS/INCH (0.74KG/MM) MINIMUM

REVISION DATE:



LAND BANK OF THE PHILIPPINES
PROJECT MANAGEMENT & ENGINEERING DEPT.
1598 M.H. DEL PILAR ST., CORNER DR. QUINTOS ST., MALATE
MANILA

TITLE:
**LANDBANK BRANCH/ FIELD UNITS
(LC/AC) MAIN DOOR GLASS DECALS**

LANDBANK STANDARD DETAILS AND SPECIFICATIONS

RECOMMENDING APPROVAL:

Enrico D. Samaniego
ENRICO D.J. SAMANIEGO
HEAD, PMED

SHEET CONTENT:

ELEVATION
BLOW-UP DETAIL - A
BLOW-UP DETAIL - B
LEGEND
FONT TYPE
COLOR GUIDE
PHYSICAL PROPERTIES

DESIGN : TSU, PMED

DRAWN : *A. Eborra* A. EBORRA

DATE : 2nd May 2021

CHECKED : *M. Padua* M. PADUA

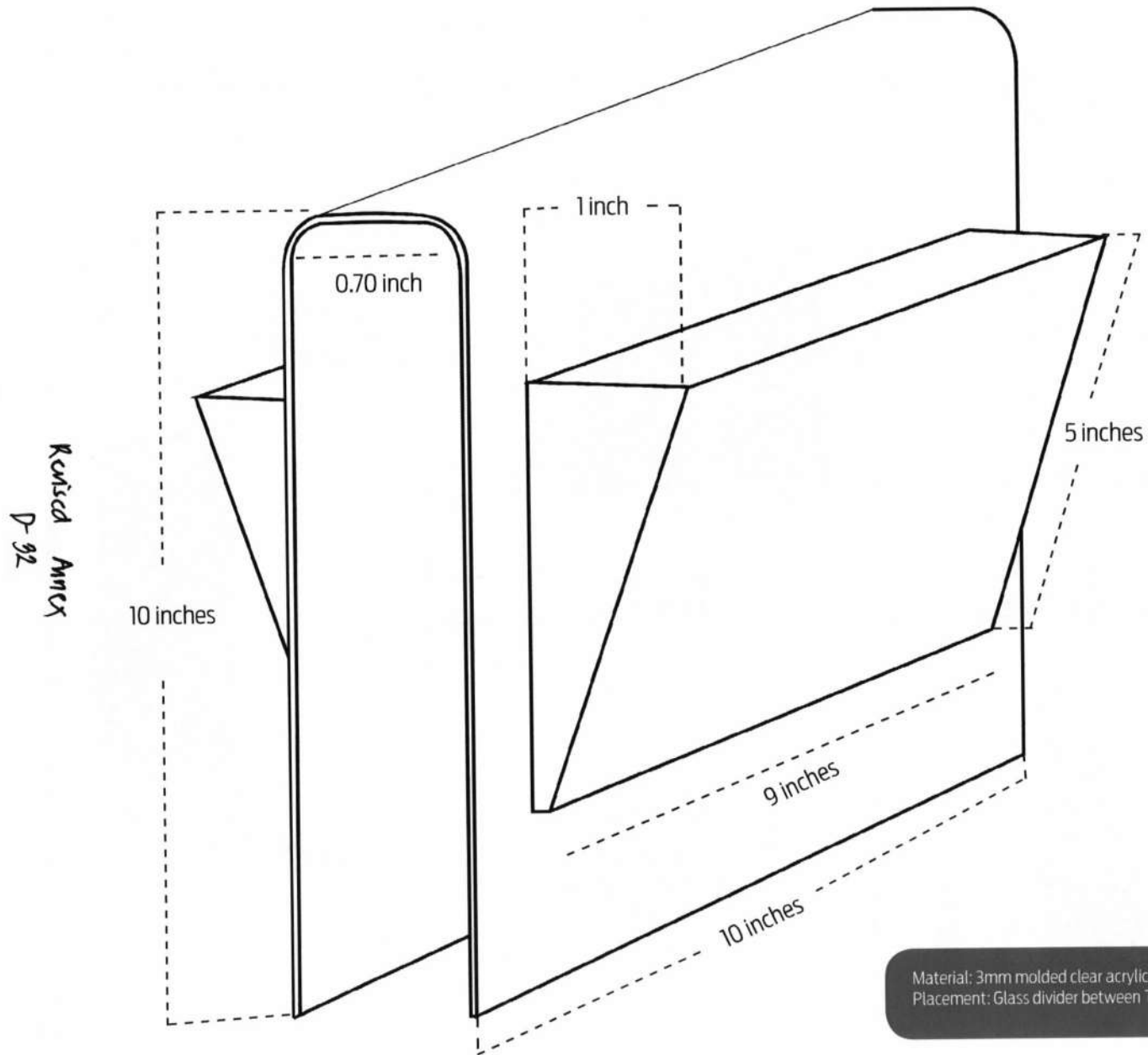
REVIEWED : *I. Mislang* I. MISLANG

SHEET NO.

A
1

Revised Annex P-91.

Acrylic Transaction Bins

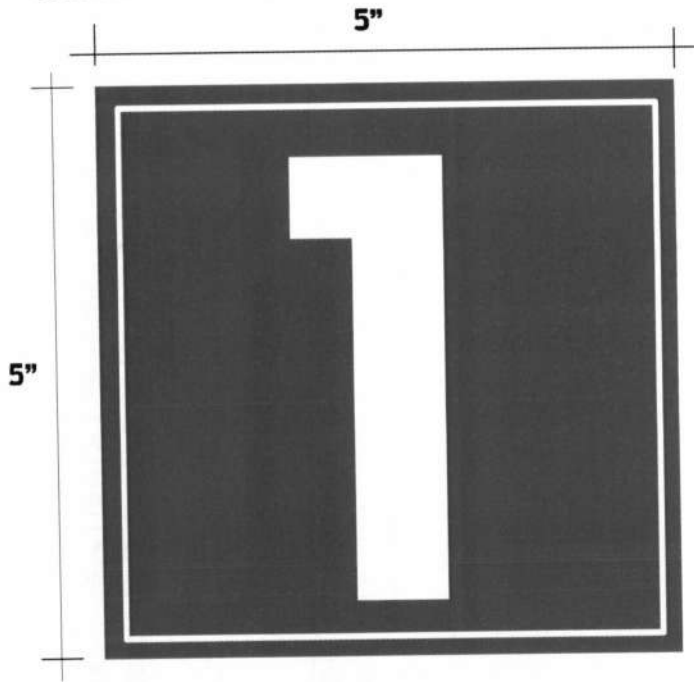


Material: 3mm molded clear acrylic
Placement: Glass divider between Tellers and Verifier

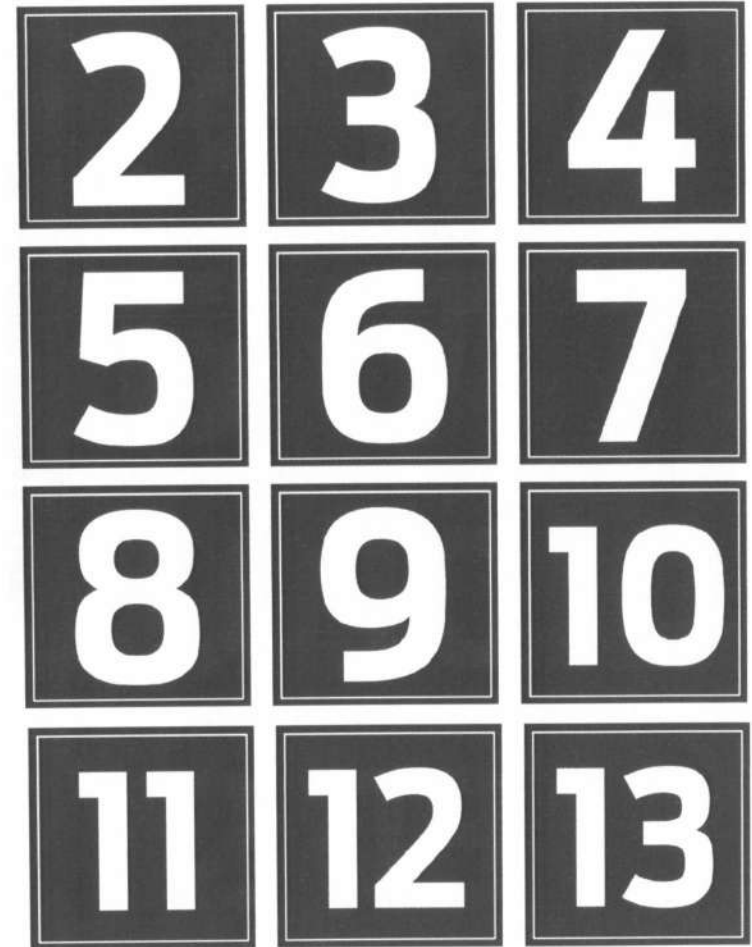
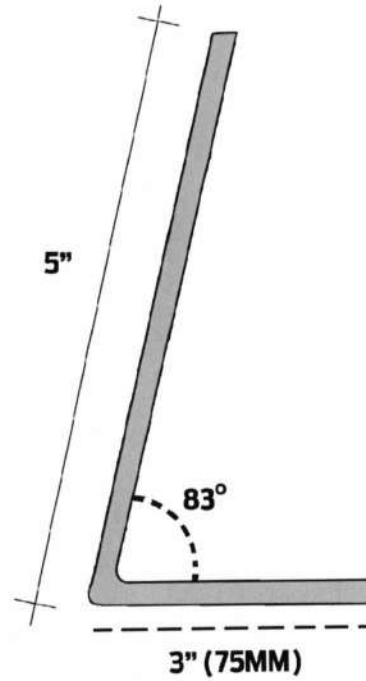
Acrylic Teller Number Standees

*Revised Annex
D-98*

Front View



Side View



Specifications:

- A) Reverse digital colored printing on Avery frosted sticker mounted on 3mm clear acrylic with white backing
- B) Final artwork/design of material for printing will be provided by LANDBANK
- C) Font Type: Antenna Condensed Bold
- D) Final sticker application should not have any visible air pockets or bubbles.